



Catalog Soccer tables accessories

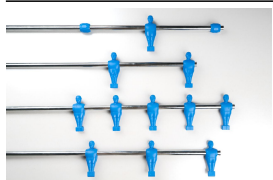
Aste ed ometti

2 Players' rod with square foot



Rod 2 players passing dm. 16 mm. Code 1001 thickness 2,3 mm.; length 1210 mm.; thickness chrome from 0,011 to 0,022 Red Color Code 1002 thickness 2,3 mm.; length 1210 mm.; thickness chrome from 0,011 to 0,022 Blue Color Code 10012P thickness 2,3 mm.; length 1210 mms.; thickness chrome from 0,02 to 0,04 Red Color Code 10022P thickness 2,3 mm.; length 1210 mm.; thickness chrome from 0,02 to 0,04 Blue Color Are available on demand rods yellow/black/orange colored, on demand it is possible to have any color RAL or Pantone. Contact us for time and the costs. Rod 2 players telescopic dm. 16 mm. x 805 Code 1422E thickness 2 mm.; length 805 mm.; thickness chrome from 0,011 to 0,022 Blue Color Are available on demand rods yellow/black/orange colored, on demand it is possible to have any color RAL or Pantone. Contact us for time and the costs.

Rod 2 players with inclined foot



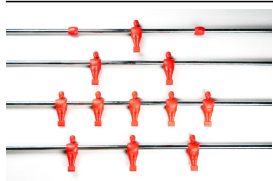
Rod 2 players passing dm. 16 mm.
Code 1001PIRS thickness 2,3 mm.; length 1210 mm.; thickness chrome from 0,011 to 0,022 Red Color Code 1002PIBL thickness 2,3 mm.; length 1210 mm.; thickness chrome from 0,011 to 0,022 Blue Color Code 1001PI2P thickness 2,3 mm.; length 1210 mms.; thickness chrome from 0,02 to 0,04 Red Color Code 1002PI2P thickness 2,3 mm.; length 1210 mm.; thickness chrome from 0,02 to 0,04 Blue Color Are available on demand rods yellow/black/orange colored, on demand it is possible to have any color RAL or Pantone. Contact us for time and the costs. Rod 2 players telescopic dm. 16 mm. x 805
Code 1421EPI thickness 2 mm.; length 805 mm.; thickness chrome from 0,011 to 0,022 Red Color Code 1422EPI thickness 2 mm.; length 805 mm.; thickness chrome from 0,011 to 0,022 Blue Color Are available on demand rods yellow/black/orange colored, on demand it is possible to have any color RAL or Pantone. Contact us for time and the costs.

Rod 2 holes passing



Code 1117
Rod 2 holes passing dm. 16 mm.; thickness 2,3 mm.; length 1210 mm. with 2 holes 4 mm.; thickness chrome from 0,011 to 0,022.
OTHER LENGTHS HOLE POSITIONS ON DEMAND;
SEND US A SKETCH TO RECEIVE A "PREVENTIVE."

3 Players' rod with square foot



Rod 3 players passing dm. 16 mm.

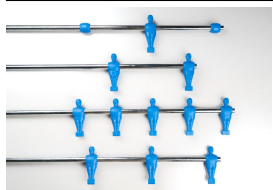
Code 1003E thickness 2,3 mm.; length 1070 mm.; thickness chrome from 0,011 to 0,022 Red Color Code 1004E thickness 2,3 mm.; length 1070 mm.; thickness chrome from 0,011 to 0,022 Blue Color Code 10032P thickness 2,3 mm.; length 1070 mms.; thickness chrome from 0,02 to 0,04 Red Color Code 10042P thickness 2,3 mm.; length 1070 mm.; thickness chrome from 0,02 to 0,04 Blue Color Are available on demand rods yellow/black/orange colored, on demand it is possible to have any color RAL or Pantone.

Contact us for time and the costs. Rod 3 players telescopic dm. 16 mm. x 805

Code 1423E thickness 2 mm.; length 805 mm.; thickness chrome from 0,011 to 0,022 Red Color Code 1424E thickness 2 mm.; length 805 mm.; thickness chrome from 0,011 to 0,022 Blue Color Are available on demand rods yellow/black/orange colored, on demand it is possible to have any color RAL or Pantone.

Contact us for time and the costs.

Rod 3 players with inclined foot



Rod 3 players passing dm. 16 mm.

Code 1003EPIRS thickness 2,3 mm.; length 1070 mm.; thickness chrome from 0,011 to 0,022 Red Color Code 1004EPIBL thickness 2,3 mm.; length 1070 mm.; thickness chrome from 0,011 to 0,022 Blue Color Code 1003PI2P thickness 2,3 mm.; length 1070 mms.; thickness chrome from 0,02 to 0,04 Red Color Code 1004PI2P thickness 2,3 mm.; length 1070 mm.; thickness chrome from 0,02 to 0,04 Blue Color Are available on demand rods yellow/black/orange colored, on demand it is possible to have any color RAL or Pantone.

Contact us for time and the costs. Rod 3 players telescopic dm. 16 mm. x 805

Code 1423EPI thickness 2 mm.; length 805 mm.; thickness chrome from 0,011 to 0,022 Red Color Code 1424EPI thickness 2 mm.; length 805 mm.; thickness chrome from 0,011 to 0,022 Blue Color Are available on demand rods yellow/black/orange colored, on demand it is possible to have any color RAL or Pantone. Contact us for time and the costs.

Rod 3 holes passing

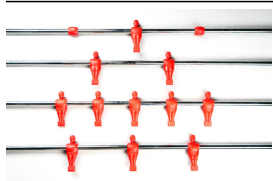


Code 1118

Rod 3 holes passing dm. 16 mm.; thickness 2,3 mm.; length 1070 mm. with 3 holes 4 mm.; thickness chrome from 0,011 to 0,022.

OTHER LENGTHS HOLE POSITIONS ON DEMAND;
SEND US A SKETCH TO RECEIVE A "PREVENTIVE."

1 Players' rod with square foot



Rod 1 player and 2 stop rings passing dm. 16 mm.

Code 1005E thickness 2,3 mm.; length 1045 mm.; thickness chrome from 0,011 to 0,022 Red Color Code 1006E thickness 2,3 mm.; length 1045 mm.; thickness chrome from 0,011 to 0,022 Blue Color Code 10052P thickness 2,3 mm.; length 1045 mms.; thickness chrome from 0,02 to 0,04 Red Color Code 10062P thickness 2,3 mm.; length 1045 mm.; thickness chrome from 0,02 to 0,04 Blue Color Are available on demand rods yellow/black/orange colored, on demand it is possible to have any color RAL or Pantone.

Contact us for time and the costs. Rod 1 player and 1 stop ring telescopic dm. 16 mm. x 805

Code 1425E thickness 2 mm.; length 805 mm.; thickness chrome from 0,011 to 0,022 Red Color Code 1426E thickness 2 mm.; length 805 mm.; thickness chrome from 0,011 to 0,022 Blue Color Are available on demand rods yellow/black/orange colored, on demand it is possible to have any color RAL or Pantone.

Contact us for time and the costs.

1 Players' rod with inclined foot



Rod 1 player and 2 stop rings passing dm. 16 mm.

Code 1005EPIRS thickness 2,3 mm.; length 1045 mm.; thickness chrome from 0,011 to 0,022 Red Color Code 1006EPIBL thickness 2,3 mm.; length 1045 mm.; thickness chrome from 0,011 to 0,022 Blue Color Code 1005PI2P thickness 2,3 mm.; length 1045 mms.; thickness chrome from 0,02 to 0,04 Red Color Code 1006PI2P thickness 2,3 mm.; length 1045 mm.; thickness chrome from 0,02 to 0,04 Blue Color Are available on demand rods yellow/black/orange colored, on demand it is possible to have any color RAL or Pantone.

Contact us for time and the costs. Rod 1 player and 1 stop ring telescopic dm. 16 mm. x 805

Code 1425EPI thickness 2 mm.; length 805 mm.; thickness chrome from 0,011 to 0,022 Red Color Code 1426EPI thickness 2 mm.; length 805 mm.; thickness chrome from 0,011 to 0,022 Blue Color Are available on demand rods yellow/black/orange colored, on demand it is possible to have any color RAL or Pantone.

Contact us for time and the costs.

Rod 1 holes passing



Code 1119

Rod 1 hole passing dm. 16 mm.; thickness 2,3 mm.; length 1045 mm. with 3 holes 4 mm. (2 lateral for stop ring);

thickness chrome from 0,011 to 0,022.

OTHER LENGTHS HOLE POSITIONS ON DEMAND;

SEND US A SKETCH TO RECEIVE A "PREVENTIVE."

5 Players' rod with square foot



Rod 5 players passing dm. 16 mm.

Code 1007E thickness 2,3 mm.; length 980 mm.; thickness chrome from 0,011 to 0,022 Red Color Code 1008E thickness 2,3 mm.; length 980 mm.; thickness chrome from 0,011 to 0,022 Blue Color Code 10072P thickness 2,3 mm.; length 980 mms.; thickness chrome from 0,02 to 0,04 Red Color Code 10082P thickness 2,3 mm.; length 980 mm.; thickness chrome from 0,02 to 0,04 Blue Color Are available on demand rods yellow/black/orange colored, on demand it is possible to have any color RAL or Pantone.

Contact us for time and the costs. Rod 5 players telescopic dm. 16 mm. x 805

Code 1427E thickness 2 mm.; length 805 mm.; thickness chrome from 0,011 to 0,022 Red Color Code 1428E thickness 2 mm.; length 805 mm.; thickness chrome from 0,011 to 0,022 Blue Color Are available on demand rods yellow/black/orange colored, on demand it is possible to have any color RAL or Pantone. Contact us for time and the costs.

5 Players' rod with inclined foot



Rod 5 players passing dm. 16 mm.

Code 1007EPIRS thickness 2,3 mm.; length 980 mm.; thickness chrome from 0,011 to 0,022 Red Color Code 1008EPIBL thickness 2,3 mm.; length 980 mm.; thickness chrome from 0,011 to 0,022 Blue Color Code 1007PI2P thickness 2,3 mm.; length 980 mms.; thickness chrome from 0,02 to 0,04 Red Color Code 1008PI2P thickness 2,3 mm.; length 980 mm.; thickness chrome from 0,02 to 0,04 Blue Color Are available on demand rods yellow/black/orange colored, on demand it is possible to have any color RAL or Pantone.

Contact us for time and the costs. Rod 5 players telescopic dm. 16 mm. x 805

Code 1427EPI thickness 2 mm.; length 805 mm.; thickness chrome from 0,011 to 0,022 Red Color Code 1428EPI thickness 2 mm.; length 805 mm.; thickness chrome from 0,011 to 0,022 Blue Color Are available on demand rods yellow/black/orange colored, on demand it is possible to have any color RAL or Pantone. Contact us for time and the costs.

Rod 3 holes passing

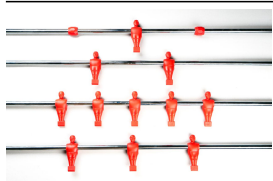


Code 1120

Rod 5 holes passing dm. 16 mm.; thickness 2,3 mm.; length 980 mm. with 5 holes 4 mm.; thickness chrome from 0,011 to 0,022.

OTHER LENGTHS HOLE POSITIONS ON DEMAND;
SEND US A SKETCH TO RECEIVE A "PREVENTIVE."

Complete sets



Code 1010E Passing rods' set Red/Blue complete of 8 rods and 8 end-tips; chrome thickness from 0,011 to 0,022; rod thickness 2 mm. for 5, 3 and 1 players' rod, 2,3 mm. for the 2 players. Rectangular foot. Code 1010EPI Passing rods' set Red/Blue complete of 8 rods and 8 end-tips; chrome thickness from 0,011 to 0,022; Rod thickness 2 mm. for 5,3 and 1 players' rod, 2,3 mm. for the 2 players. Inclined foot. Code 10102

Passing rods set Red/Blue complete of 8 rods and 8 end-tips; chrome thickness from 0,022 to 0,040; Rod thickness 2,3 mm. Rectangular foot. Code 10102PI Passing rods set Red/Blue complete of 8 rods and 8 end-tips; chrome thickness from 0,022 to 0,040; Rod thickness 2,3 mms. Inclined foot.

Code 1420E Telescopic rods set Red/Blue complete of 8 rods and 8 internal rods 10 mm; chrome thickness from 0,011 to 0,022; rod thickness 2 mm. Rectangular foot.

Code 1420EPI Telescopic rods set Red/Blue complete of 8 rods and 8 internal rods 10 mm; chrome thickness from 0,011 to 0,022; rod thickness 2 mm. Inclined foot.

Are available on demand rods yellow/black/orange colored, on demand it is possible to have any color RAL or Pantone.

Contact us for time and the costs.

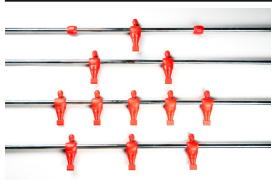
Code 1920 Telescopic rods set for baby Red/Blue complete of 4 rods and 4 internal rods 10 mm; chrome thickness from 0,011 to 0,022; rod thickness 2 mm.

Rectangular foot.

Code 1116 Passing rods set with holes; chrome thickness from 0,011 to 0,022; rod thickness 2.3 mm. with holes dm. 4 mm.

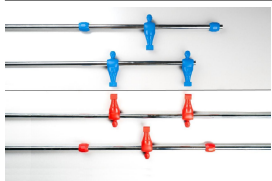
OTHER LENGTHS HOLE POSITIONS ON DEMAND;
SEND US A SKETCH TO RECEIVE A "PREVENTIVE."

18 mm. set



From April-May as regular supply it will be available the dm.18 mm. set by order Initially will be available the passing and telescopic series with square and inclined foot, the slide bushing without the spheres and the handle grip L97 for the 18 mm. Contact us for further information.

Telescopic rods' set for baby



Code 1920

Telescopic rods set for baby Red/Blue complete of 4 rods and 4 internal rods 10 mm; chrome thickness from 0,011 to 0,022; rod thickness 2 mm.

Rectangular foot.

Player



Code 1301/1302

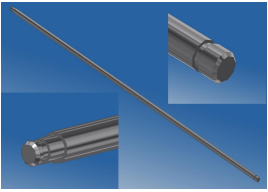
Player for passing rods dm. 16 mm. with holes 3 mm. with square foot. Red/Blue.

Code 1301P/130P

Player for passing rods dm. 16 mm. with holes 3 mm. with inclined foot. Red/Blue.

Are available on demand players yellow/black/orange colored, on demand it is possible to have any color RAL or Pantone. Contact us for time and the costs.

Internal rod



Code 1419 Internal rod for Clik telescopic rods dm. 10x750 mm. High-quality steel, well chromed, for mounting with lock washer.

End-tip



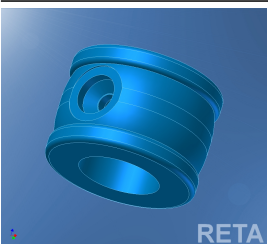
Code 1009
End-tip for passing rods dm.16 mm. Poliethylene first choice black.

Galvanized iron stop-ring



Code 1398
Galvanized iron stop-ring for rods with holes with grub screw M6 for rods dm. 16 mm.

Stop ring in plastics



Code 1883RS16/1883BL16
Stop ring in plastics dm.16 Color Red/Blue for screw flared head 4mm. In PP with integrated washer.

Custom perforated rods



Custom perforated rods can be produced but ONLY for minimum quantities of 300 pieces per rod. The same applies to those overmolded, but can be produced ONLY with certain interaxes. Contact us for estimates and feasibility analysis.

Boccole

Slide Bushing



Code 1555

"Slide" passing bushing 16 mm. in 3 pieces and 2 screws; with ball bearing with aisi 304 balls. BUSHING IN PBTP, BALLS INOX 304, 2 CAGES FOR 20 BALLS.

Code 1565

"Slide" passing bushing 16 mm. in 3 pieces and 2 screws; WITH FIXED BUSHING. Black elastomerized polyamide.

Slide telescopic bushing



Code 1558

"Slide" telescopic bushing 10 mm. complete with 2 small rubbers, 1 lock washer and 2 screws. Black elastomerized polyamide.

Fast Bushing



Code 1862

"Fast" passing bushing 16 mm. in 4 pieces and 2 screws. Black polyamide. with sliding Reta formulated additive. For thickness from 22 mms. and over

Code 186219

"Fast" passing bushing 16 mm. in 4 pieces and 2 screws. Black polyamide. with sliding Reta formulated additive. For thickness from 19 mms. to 22 mms

A 90 bushing



Code 1606

"A 90" passing bushing 16 mm. in 4 pieces and 2 screws. Black elastomerized polyammide.

Code 1607

"A 90" passing bushing 16 mm. in 4 pieces. Black elastomerized polyammide.

A91 telescopic Bushing



Code 1613

"A 91" telescopic bushing 10 mm. complete with 2 small rubbers 10 mm., 1 lock washer and 2 screws. Black elastomerized polyammide.

Bushing plate



Code 1067/1068

Bushing plate for normal bushing in Polypropylene Red/Blue. Available to exhaustion.

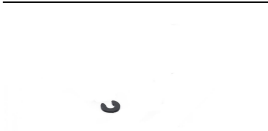
Normal bushing



Code 1060/1061

Normal bushing in dm. 14 or 16 mm. Natural polyammide.

Lock-washer



Code 1080

Lock-washer for internal rod. POM black.

Fast telescopic bushing



Code 1948

"Fast" bushing for 10 mm internal telescopic rods. suitable for 19 mm shore and more. Black polyamide.

Manopole

Handle A73



Code 1051/1051RS/1051BL

"A 73" handle for mm. 16 rods. Polypropylene 1°; choice. Colors: Black/ Red/ Blue. OTHER COLORS ON REQUEST.

L97 handle



Code 1730

"L97" handle in thermoplastic black rubber. Recently the grip has been improved.

Grippy handle



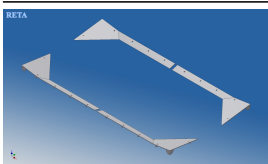
Code 1627

"Grippy" M 92 handle for mm. 16 rods. Polypropylene 1°; choice. Colors: Black.

OTHER COLORS ON REQUEST.

Angolari e segnapunti

Corners



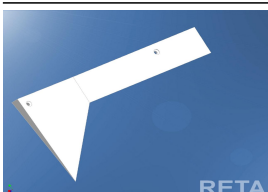
Code 1081

Stop-glass corners ABS white. Only 4 pieces sets (2 left e 2 rights). OTHER COLORS AVAILABLE ON REQUEST.

Code 1809

Corners PS white. Only 4 pieces sets (2 left e 2 rights). Good for soccer tables with plain with no glass. OTHER COLORS AVAILABLE ON REQUEST.

Baby angular series



Code 1893

Angular series for baby soccer in Polystyrene White. Length 262, Width 115, Height 11 in mm.

Cube point-marker



Code 1083/1084/1085/1083NR/1083VE

Cube point-marker complete with square rod 10x310 mm., 10 cubes and 2 terminals.

Polypropylene 1st. choice. Colors: Yellow / Red / Blue / Black / Green. On request are available numbered cubes.

OTHER COLORS AVAILABLE ON REQUEST.

Circular numbered point-marker



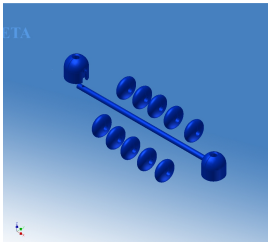
Code 1062/1063

Circular numbered point-marker dm. 100 mm. with 2 screws, nuts and washers.

Polypropylene 1st. choice. Colors Red / Blue.

OTHER COLORS AVAILABLE ON REQUEST.

Ball-frame point-marker



Code 1907xx

Ball-frame point-marker complete with rod ABS., 10 ball-frames, 2 terminals. Polypropylene 1°; choice.

Colors Red / Blue.

Code 1907xx

Ball-frame point-marker complete with iron rod, 10 ball-frames, 2 terminals. Polypropylene 1°; choice.

Colors Red / Blue. On request.

Available only ball-frames on request.

OTHER COLORS AVAILABLE ON REQUEST.

Soccer tables' cardboard



Code 1280

Soccer tables' cardboard for mounting under the glass. Green color.

Palline, Piedini, Molle e altro

Ball



Code 1055/1056/1057/1058/1059

Polyethylene 1st choice ball. Colors: White / Yellow / Electric Orange / Electric yellow / hot red (till available).

OTHER COLORS AVAILABLE ON REQUEST.

Code 1055S

Silent ball small rebounding in PE and elastomere white.

OTHER COLORS AVAILABLE ON REQUEST.

Bottle-rack



Code 1546

Bottle-rack for holes dm. 78 mm. Black (dm. 95x64 mm)

Ashtray/bottle



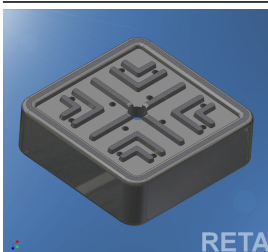
Code 1698NR/RS/BL

Ashtray/bottle rack in PBTP. Colors Black/Red/Blue. Available with hole or screw attack on the back.

Good for more than 200°C; C. It's HB2 flame retardant. Certificate available.

OTHER COLORS AVAILABLE ON REQUEST.

Black square leg's foot 70 mm.



Code 1888

Black polypropylene soccer tables's; square leg's foot 70 mm.

Polyethylene soccer tables



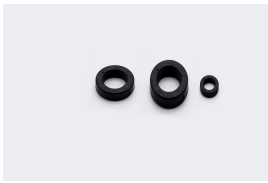
Code 144581

Black polyethylene soccer tables's; leg's foot diameter 70 mm.

Code 144612

Black polyethylene soccer tables's; leg's foot diameter 80 mm.

Thermoplastic rubber's



Code 1071/1072/1073/1074

Black thermoplastic rubber's small-rubber for telescopic rods dm. 10/16 mm. or passing rods 14/16 mm.

Polyamide washer for rods



Code 1077/1078/1079

Polyamide washer for rods dm. 10/14/16 mm.

Conic spring



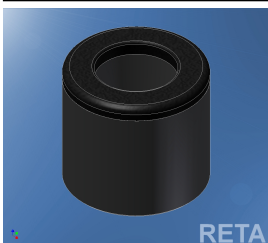
Code 1113

Galvanized steel conic spring for mm. 16 rods; length 41 mm.

Code 1115

Galvanized steel conic spring for mm. 10 rods; length 20 mm. For telescopic rod.

Complete rubber spring



Code 1889Cxx Complete rubber spring constituted by rubber spring in rubber and Washer in PA 6. Standard hardness 50 Shore. Available in various Lengths (currently 32, 27, 19, 21). Only rubber thermoplastic adherent to all the norms. NO PVC. The double minuscule x in the code serves to indicate the length. Black color

Rectified ball



Rectified ball, available in various blends of materials and in various surface finishes and colors. Send us your requests and we will try to satisfy you.

Porte, cornici e raccogli-palline

Soccer table's goal



Code 1654B/1654C/1654A

Soccer table's goal for fitting-in mounting 200(L) x 72 (H) x 95 (T) mm. Radius 25 mm. for lateral thickness 17, 19 or 23 mm. Black polyethylene.

THE ESTHETIC FRAME CAN BE MADE WITH PARTICULAR SHAPES ON REQUEST!

Family soccer table's frame



Code 1656

Family soccer table's frame for fitting-in mounting with screws 132(L) x 62(H) x 25(T) mm. Radius 10 mm. on lateral. Black polypropylene.

THE ESTHETIC FRAME CAN BE MADE WITH PARTICULAR SHAPES ON REQUEST!

Frame for balls collecting goal



Code 1882A

Frame for balls collecting goal in black PE. Thickness wall 22 mms. On request available other thickness, personalizations frame and other colors.

Balls collecting goal



Code 1880NR

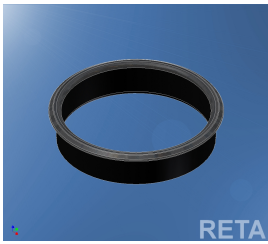
Balls collecting home soccer goal in PE. The external part is partially style modifying on request. On request may be also available in other colors.

Frame dm.80x22



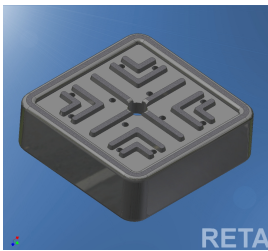
Code 1881AFrame dm.80x22 in pp black.

Frame dm.100x22



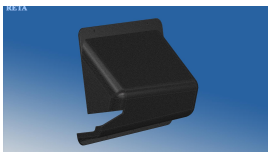
Code 1881B
Frame dm.100x22 in pp black.

Black square leg's foot 80 mm..



Code 1932
Black polypropylene soccer tables's; square leg's foot 80 mm.

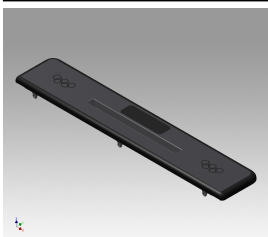
Balls collecting home soccer goal with lateral ball yield.



Code 1984NR Balls collecting home soccer goal in PP high impact with lateral ball yield. The external part is partially style modifying on request. On request may be also available in other colors.

Paramani e altri accessori

Side coverage



Cod.1860NR Side coverage in PA6 elastomere. With center die scorer integrated. It settles with wood screws. Black color. Available application in other colors.

Spacer-sleeve for ball-collectors



Code 1106
Spacer-sleeve for ball-collectors; Black polypropylene. Hole dm. 6, length 36 mm.

Gettoniere e accessori

"Base" coin rejector



"G Super" coin rejector

Code 1124 Coin rejector for token 4 slots dm.24,7

Code 1125 Coin rejector for token 4 slots dm.20

Code 1126 Coin rejector for token 3 slots dm.20

Code 1127 Coin rejector for token 5 slots dm.20

Code 1134 Coin rejector 2 euro

Code 1150 Coin rejector for other coins

Code 1151 Coin rejector 1 euro

Code 1152 Coin rejector 50 cent.

Code 1153 Coin rejector 20 cent.

MR89 Coin rejector (only indicative Photo)



Code 1189GE

MR89 Coin rejector for coins or tokens (ask for what you are interested). Counter supplied on request.

Tokens



Code 1102/1104/1100/1101/1103 Token dm. 24,7 mm. 4 near slots (1102) and 4 distant slots (1104) / dm. 20 mm. a 3, 4, 5 slots.

Non zeroable counter



Code 1270

Non zeroable counter for coin rejector complete with leverage. ATTENTION! please don't try to mount it yourself.

Accessori biliardo carambola

Point-marker for billiard



Code 1202

Point-marker for billiard complete of: N. 1 double set of 50 ABS hot-numbered cubes Red and White; N. 2 chrome-plated brass rods; N. 1 simple chrome plated holder; N. 1 chrome plated holder with handwheel. Bushings in polyamide.

SPARE PARTS:

Code 1203 Double set of numbered cubes

Code 1206 Chrome plated holder with handwheel

Code 1207 Chrome plated simple holder

Code 1208 Chrome plated copper rod 7x7x670 mm.

Code 1209 Slide bushing

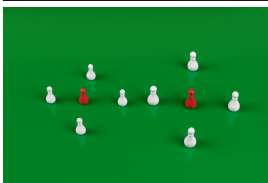
Billiard compasses



Code 1222

Billiard compasses ABS length 335 mm. Available in various colors.

Set of ninepins



Code 1210/1211

Set of ninepins: 4 acetal White + 1 acetal Red. Confection of 100 sets. Length 18/21 mm.

Billiard cue



Immagine solo indicativa
Image just indicative
Image Indicative
Indikatives bild

Code 1234

Billiard cue length 1450 mm.; wood with screwed tip and big rubber tip. (economic model).

Box of 12 chalks



Code 17003
Box of 12 chalks Pioneer.
Code 17005
Box of 12 chalks Master blue.

Chalk-holder



Code 114078
Chalk-holder Tec.
Code 114080
Chalk-holder luxury Nir.

Spring-clips Black



Code 45020/45022/45024/45026
Spring-clips Black polyamide sizes: 17 (from 17 to 23 mm.) / 22 (from 22 to 28 mm) / 27 (from 27 to 35 mm.) / 34 (from 34 to 45 mm.).WONDERFUL TO FIX CUES TO CUE-HOLDERS.
Code 45021/45023/45025/45027
The same white.

Double cue-holder



Code 1199 Double cue-holder Black polypropylene.

Set balls 48 mm



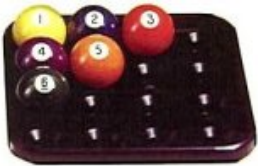
Code 1183
Set balls 48 mm.: 5 Red (1 white-pointed) 5 White (1 Red pointed).

Triangle for 16 balls



Code 118031N/B
Triangle for 16 balls for diam. 57 Black/White.

Tray for 16 pool bilies



Code 120090
Tray for 16 pool bilies Black.

Point-marker for pool tables



Code 1200/1201
Point-marker for pool tables; Black ABS with White-Red / White-Blue hot numbered 0 / 99.



Pocket liners set



Code 114060
Pocket liners set mm. 75.
Code 114061
Pocket liners set mm. 100.

Gully Boots set.



Code 17100
Gully Boots set.

Packing for hole



Code 1196
Packing for hole for small pool tables Black polyethylene.

Ring for hole



Code 1185/1186/1189/1190/1193/1194
Ring for hole polypropylene Ivory/Red dm. 54 / 62 / 65 mm.

Stopper for hole



Code 1187/1188/1191/1192
Stopper for hole polypropylene Ivory/Red dm. 54 / 62 mm.

Set. of numbers



Code 1223/1224 Set. of numbers for "Bazzica" in polypropylene Red / Blue numbered from 1 to 16.
Bazzica is a billiard or pool table game in which You extract a number from 1 to 16 and You have to have the same number with the sum of points of balls in holes.

Accessori per altri giochi

Obstacle



Code 1173/1174
Large-size Ivory/Red polypropylene obstacle complete with washer and nut.

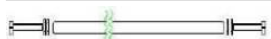
TAM TAM showel



Code 1214

TAM TAM showel in black polyethylene with hand defender.

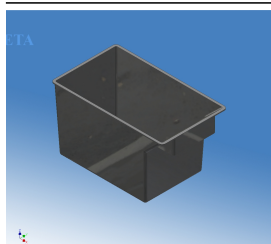
Rod for TAM TAM showel



Code 1215

Rod for TAM TAM showel code 1214 in C40 chrome-plated complete with 4 washers 10 mm. and 2 bolts TE 8x40.

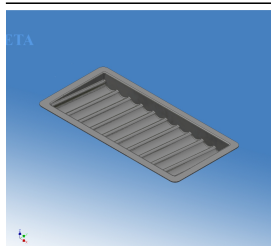
Coin container



Code 1910

Coin container 263(L)x150(P)x155(S) mm. PE black

Fiches holder



Code 1911 Fiches holder 464x223 mm. ABS black